

MEET THE TEACHER

CLASS - OAK

TEACHERS - MISS WREFORD, MRS PEGRUM



Success for All

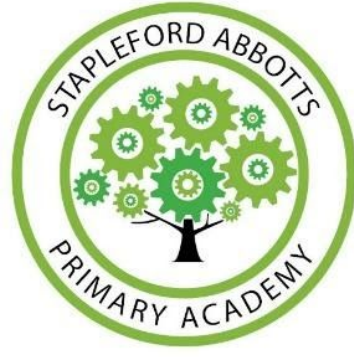
BEHAVIOUR



Stapleford Abbotts Primary Academy Our success pledge



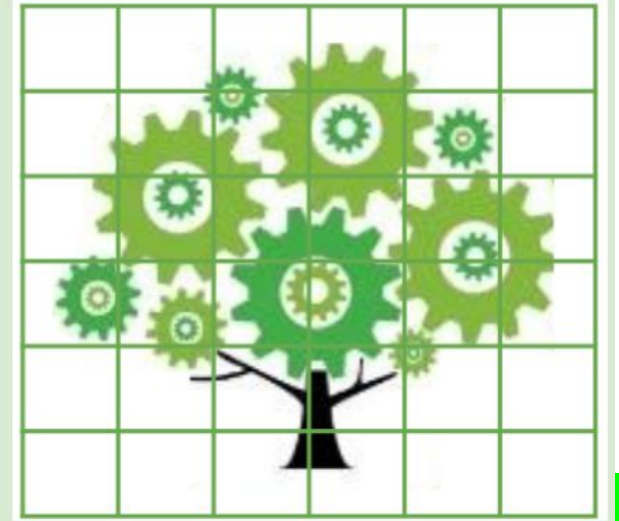
To be successful we will have a positive attitude
We will be kind and polite to others
We will be proud of our school
We will strive to be successful learners



BEHAVIOUR

Pledge time

When our pledge is complete we will celebrate by.....



BEHAVIOUR



Positive

- On Green
- Pledge points
- Marvellous Me
- Hot chocolate
- Headteacher's Awards



Negative

- Yellow 1
- Yellow 2
- Orange
- Red



BEHAVIOUR

Uniform Policy



OUR WEEK:



Oak class timetable Autumn 1



PE days: Monday/Friday

PE uniform:
 Navy shorts or skirt
 White T-shirt with School Academy logo
 Trainers for outside
 Plimsolls for inside
 Navy plain tracksuit

Day	8:45 - 9:00	9:00 - 9:30	9:30 - 10:30 10:30-10:45		10:45 - 11:00	11:00 - 12:00		12-1:00	1:00-1:15	1:15-1:30	1:30 - 2:30	2:30 - 2:50	3:00 - 3:15
Mon	Independent Reading / Quizzes	VIPERS	Talk For Writing	PSHE 10.15am	Break	Maths arithmetic	handwriting	Lunch	Foundation		PE indoor 1:45pm	Assembly Interventions	Big Read
Tues		VIPERS	Talk For Writing	Handwriting		Maths	Maths Meeting		Foundation		Assembly Interventions	Big Read	
Wed		VIPERS	Talk For Writing	Handwriting		Maths	Maths Meeting		Foundation		Assembly Interventions	Big Read	
Thur		VIPERS	Talk For Writing	HW mark		Maths	Maths Meeting		Spanish	Science		Big Read	
Fri		Non fiction VIPERS	Talk For Writing	HT assembly		Maths	Forest school			Big Read			

HOMWORK EXPECTATIONS

- OUT FRIDAY IN WEDNESDAY
- SPELLING TEST FRIDAY MORNING - BACK OF BLUE BOOK



READING EXPECTATIONS

- Reading at home every night – your child may sign their reading record themselves with a short sentence of what they have read but we still encourage parents/guardians to read with and to their children as much as possible.
- Quizzing at least once a fortnight
- A reading for pleasure book may be read aside this if confident
- Children who read every night will be put into a class raffle for an end of half term treat.
- Children who are consistently not reading: chat with parent/guardian, formal letter and conversation with Ms Speller.
- Please speak to class teacher/Ms Speller for support and guidance

READING RECORDS EXPECTATIONS

Victor Vocabulary might ask...

What does this word/sentence tell you about _____?

Can you find a word/sentence that backs up what you have just said about _____?

Why did the author use the word _____ to describe _____?

How does this word/description make you feel?

Can you think of another way of saying _____?

Which words has the author used to make you feel happy/angry/worried/frightened/nervous?

Why is this word written in bold/italics/capital letters?

What effect has the author created by repeating the word/phrase _____?

Can you give me another sentence with the word _____ in it?

Can you read around this word to work out what it means?

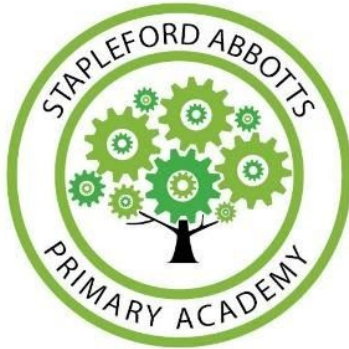
How/where can we find out the meaning of this word?

Can you find any noun phrases used to describe _____?

Can you find any adjectives used to describe _____?

Can you find any adverbs to describe how _____ was done?

Can you explain _____ in your own words?



Vocabulary Victor might ask...

What does this word tell us about the character/setting/atmosphere?

Look at that sentence/passage and circle a word/phrase that means the same as _____.

Which words/phrase in this text give us the impression that the main character is _____?

Which words/phrase in this text give us the impression that the setting is _____?

Which words/phrase in this text give us the impression that the atmosphere is _____?

The author uses words like _____ to describe _____. What impression does this give us of the character/setting/atmosphere?

The author describes the main character as _____. Think of another word that could have been used instead.

Why did the author use the word _____ to describe _____?

How does the author make the reader feel _____ in this part of the text?

How has the author's choice of words created the feeling _____?

What do phrases such as _____ tell you about _____?

What might that mean?

What do you think the writer is saying, when they _____?

What does that imply/suggest/indicate about _____?



*Why do we encourage your child to read for
20 minutes every day at home?*



Child A



Child B

**JUST
ONE
MINUTE**

Child C

20 minutes a day

5 minutes a day

1 minute a day

3,600 minutes a school year

900 minutes per school day

180 minutes per school year

1,800,000 words a year

282,000 words per year

8000 words a year

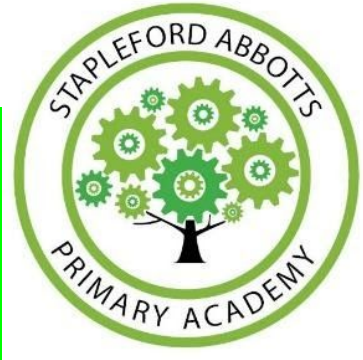
If they start reading for 20 minutes per night in Nursery, by the end of Year 6,
child A will have read for the equivalent of 60 days,
child B will have read for 12 school days and
child C will have read for 3.

That's why.



WRITING

- TALK FOR WRITING
- HANDWRITING
- SPELLING



Science - Animals including Humans	Science - Electricity	Science - Light	Science - Earth & Space	Science - Living things & their habitats	Science - Evolution & Inheritance
PSHE - What makes up a person's identity?	PSHE - Uniqueness	PSHE - How can we help in an accident or emergency?	PSHE - How can friends communicate safely?	PSHE - MIND - Social skills	PSHE - What jobs would we like?
PE - Tag Rugby Personal	PE - Gymnastics Social	PE - Basketball Social	PE - Football Physical	PE - Athletics/OAA Health and fitness	PE -Athletics/OAA Personal
History -The Victorians	Geography - Marvellous maps	History - World War 2	Geography - The hemispheres	History - Ancient Egypt	Geography - Trade and economics
Art - L.S Lowry - Victorian Sketching	DT - Puppet making - Punch and Judy	Art - Watercolours - Galaxy	DT - Anderson shelter models	Art - Egypt art - canopic jars and mask making	FT - Fair trade - cereal bar making.
Spanish - Phonics Lessons 1 and 2 - I am learning	Spanish - Animals	Spanish - I am able .. I know how to...	Spanish - Presenting myself	Spanish - My family	Spanish - In the classroom
Computing - Sharing information		Music - You to me are everything/ Building a groove	RE - Explore how Muslims show commitment to God. (I) Describe how Muslims might try to lead lives respectful to God. (I)	Computing - Selection in physical computing	RE - Creation stories (All)
Music - Hey Mr Miller/Shadows	RE - Who was the Buddha and what is Wesak? (B)			Music - Nobody knows	Whole school PSHE project

-CORE KNOWLEDGE - PARENTS TO QUESTION

ANY QUESTIONS?

PTA

We would love to
invite you to join

Supporting the school
and raising money.

Organising fun events for the
children

If you are interested please
contact us via-

Instagram: pta stapleford

Email: pta@sapa-tkat.org

Meeting's are held the first
Thursday of the month.



PROMOTE BREAKFAST CLUB/PTA/ PARENT GOVERNOR/CLUBS

