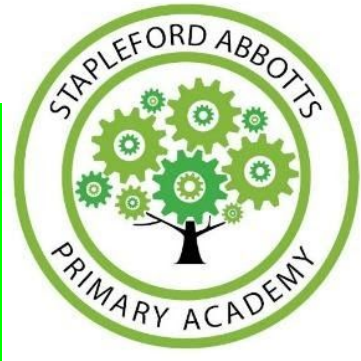


MEET THE TEACHER  
CLASS - CHERRY CLASS  
TEACHERS - MISS EDGELL



**Success for All**

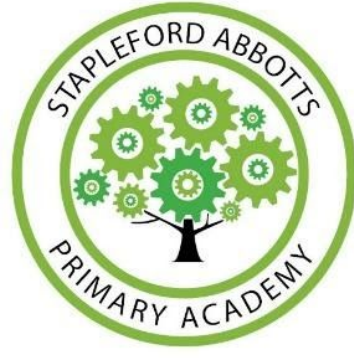
# BEHAVIOUR



## Stapleford Abbotts Primary Academy Our success pledge



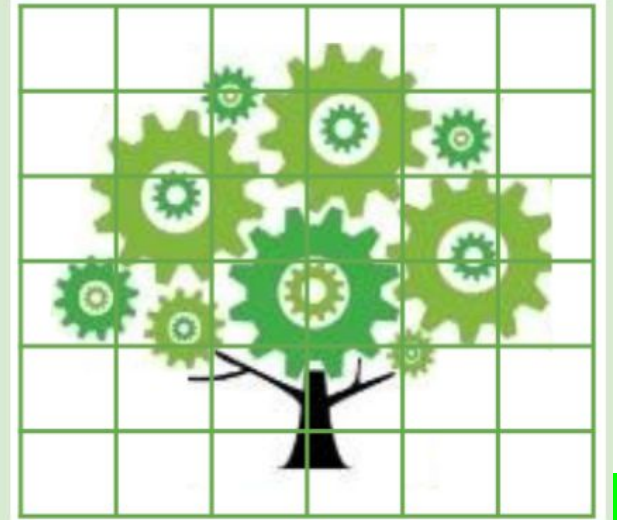
To be successful we will have a positive attitude  
We will be kind and polite to others  
We will be proud of our school  
We will strive to be successful learners



# BEHAVIOUR

## Pledge time

When our pledge is complete we will celebrate by.....



# BEHAVIOUR



## Positive

- On Green
- Pledge points
- Marvellous Me
- Hot chocolate
- Headteacher's Awards



## Negative

- Yellow 1
- Yellow 2
- Orange
- Red



# BEHAVIOUR

## Uniform Policy



PE days:  
Monday/Wednesday

PE uniform:  
Navy shorts or skirt  
White T-shirt with  
School Academy logo  
Trainers for outside  
Plimsolls for inside  
Navy plain tracksuit



# TIMETABLE

Day	9:00 - 9:00	9:00 - 9:45	9:45 - 10:00		10:00 - 10:30	10:30 - 10:45	10:45 - 11:45	11:45 - 12:00	12-1:00	1:00-1:30	1:30 - 2:30	2:30 - 2:50	2:50-3:00
Mon	Reading/Quizzes	RWI/Reading	Talk through stories		Writing	Break	Maths	Phonics	Lunch	PSHE	PE outside	Assembly Interventions	Big Read
Tues		RWI/Reading	Talk through stories		Writing		Maths	HW		Maths Meeting	Foundation	Assembly Interventions	Big Read
Wed		RWI/Reading	Talk through stories		Writing		Maths	Phonics		PE indoor	Foundation 1:45 - 2:30	Assembly Interventions	Big Read
Thur		RWI/Reading	Talk through stories		Writing		Maths	Phonics		Maths Meeting	Foundation		Big Read
Fri		RWI/Reading	Talk through stories	Writing	HT Assembly 10:30		Maths	Phonics		Spanish	Science		Big Read

# HOMWORK EXPECTATIONS

- OUT FRIDAY IN WEDNESDAY
- SPELLING TEST FRIDAY MORNING - BACK OF BLUE BOOK





# READING EXPECTATIONS

- Reading at home every night – please sign the recording recording so we can track this. We want to encourage parents/guardians to read with and to their children as much as possible.
- A reading for pleasure book may be read aside this if confident
- Children who read every night will be put into a class raffle for an end of half term treat.
- Children who are consistently not reading: chat with parent/guardian, formal letter and conversation with Ms Speller.
- Please speak to class teacher/Ms Speller for support and guidance



# READING RECORDS EXPECTATIONS

## Victor Vocabulary might ask...

What does this word/sentence tell you about \_\_\_\_\_?

Can you find a word/sentence that backs up what you have just said about \_\_\_\_\_?

Why did the author use the word \_\_\_\_\_ to describe \_\_\_\_\_?

How does this word/description make you feel?

Can you think of another way of saying \_\_\_\_\_?

Which words has the author used to make you feel happy/angry/worried/frightened/nervous?

Why is this word written in bold/italics/capital letters?

What effect has the author created by repeating the word/phrase \_\_\_\_\_?

Can you give me another sentence with the word \_\_\_\_\_ in it?

Can you read around this word to work out what it means?

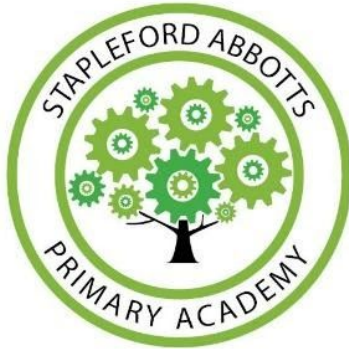
How/where can we find out the meaning of this word?

Can you find any noun phrases used to describe \_\_\_\_\_?

Can you find any adjectives used to describe \_\_\_\_\_?

Can you find any adverbs to describe how \_\_\_\_\_ was done?

Can you explain \_\_\_\_\_ in your own words?



## Vocabulary Victor might ask...

What does this word tell us about the character/setting/atmosphere?

Look at that sentence/passage and circle a word/phrase that means the same as \_\_\_\_\_.

Which words/phrase in this text give us the impression that the main character is \_\_\_\_\_?

Which words/phrase in this text give us the impression that the setting is \_\_\_\_\_?

Which words/phrase in this text give us the impression that the atmosphere is \_\_\_\_\_?

The author uses words like \_\_\_\_\_ to describe \_\_\_\_\_. What impression does this give us of the character/setting/atmosphere?

The author describes the main character as \_\_\_\_\_. Think of another word that could have been used instead.

Why did the author use the word \_\_\_\_\_ to describe \_\_\_\_\_?

How does the author make the reader feel \_\_\_\_\_ in this part of the text?

How has the author's choice of words created the feeling \_\_\_\_\_?

What do phrases such as \_\_\_\_\_ tell you about \_\_\_\_\_?

What might that mean?

What do you think the writer is saying, when they \_\_\_\_\_?

What does that imply/suggest/indicate about \_\_\_\_\_?



*Why do we encourage your child to read for  
20 minutes every day at home?*



Child A



Child B



Child C

20 minutes a day

5 minutes a day

1 minute a day

3,600 minutes a school year

900 minutes per school day

180 minutes per school year

1,800,000 words a year

282,000 words per year

8000 words a year

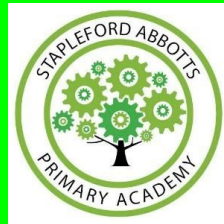
If they start reading for 20 minutes per night in Nursery, by the end of Year 6,  
child A will have read for the equivalent of 60 days,  
child B will have read for 12 school days and  
child C will have read for 3.

That's why.



# PHONICS

- PRACTICING PHONICS AT HOME.
- FLASH CARDS WILL BE SENT HOME TO PRACTICE.
- READING THEIR RWI WEEKLY BOOK.
- LOTS OF RESOURCES AVAILABLE ONLINE.



# WRITING

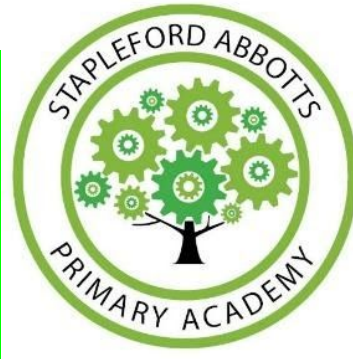
- TALK FOR WRITING
- HANDWRITING
- SPELLING



# MATHS MASTERY/TTROCKSTARS

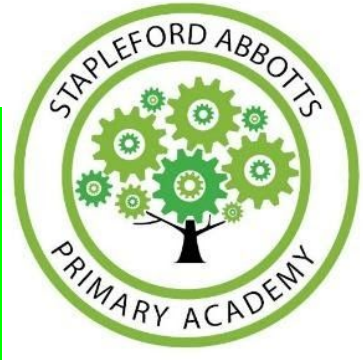


Mathematics  
Mastery



# TOPICS

- WHAT WILL BE COVERED THROUGHOUT THE YEAR
- CORE KNOWLEDGE -PARENTS TO QUESTION



# - PARENTS EVENING -

- CLASS ASSEMBLY : THURSDAY 19TH OCTOBER 2:30PM

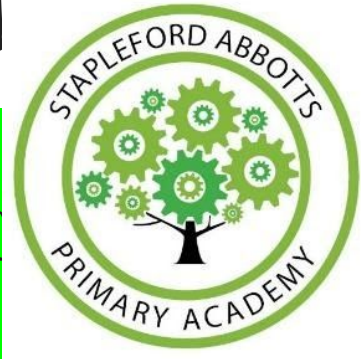
- XMAS READING CAFE : TBC

- SCIENTIST VISIT - TBC NOVEMBER

- GUIDE DOG VISIT : 5TH DECEMBER

- OLYMPIAN VISIT : TUESDAY 3RD

- PARENTS EVENING : MONDAY 20



THURSDAY 23RD NOVEMBER



PTA  
BREAKFAST CLUB  
CLUBS - ART, HOMEWORK, SCIENCE, SPORT



**PTA**

We would love to  
invite you to join

Supporting the school  
and raising money.

Organising fun events for the  
children

If you are interested please  
contact us via-

Instagram: pta stapleford  
Email: pta@sapa-tkat.org

Meeting's are held the first  
Thursday of the month.

