

MEET THE TEACHER
CLASS - SILVER BIRCH
TEACHERS - MS DAMIAN
MRS HAGERTY



Success for All

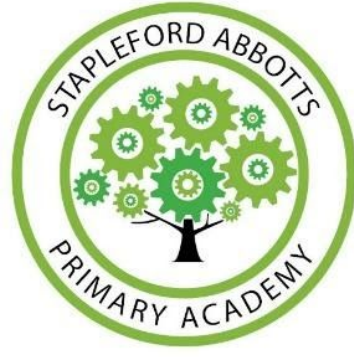
BEHAVIOUR



Stapleford Abbotts Primary Academy Our success pledge



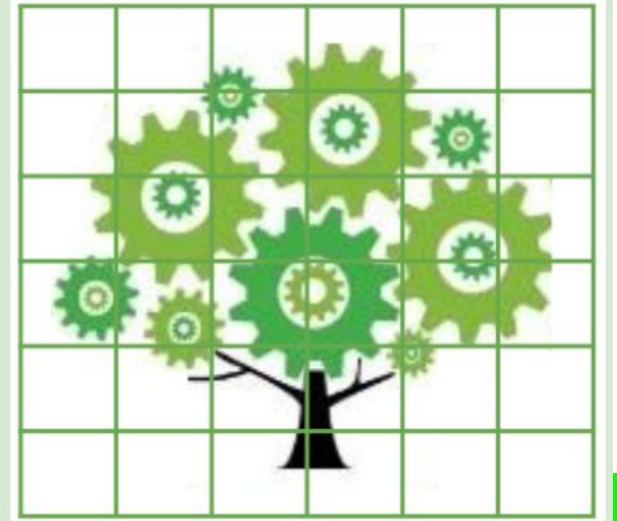
To be successful we will have a positive attitude
We will be kind and polite to others
We will be proud of our school
We will strive to be successful learners



BEHAVIOUR

Pledge time

When our pledge is complete we will celebrate by.....



BEHAVIOUR



Positive

- On Green
- Pledge points
- Marvellous Me
- Hot chocolate
- Headteacher's Awards



Negative

- Yellow 1
- Yellow 2
- Orange
- Red



Uniform Policy



PE uniform (all years)

Navy shorts or skirt

Navy t-shirt with School Academy logo

Black/navy trainers (outdoor) black

plimsolls (indoor)

Navy tracksuit for winter months
(non-branded)

ALL EARRINGS MUST BE TAKEN OUT BEFORE SCHOOL FOR PE - CHILDREN WILL NOT BE ABLE TO PARTAKE IN PE WITH EARRINGS IN (including studs)



PE days: Monday/Wednesday

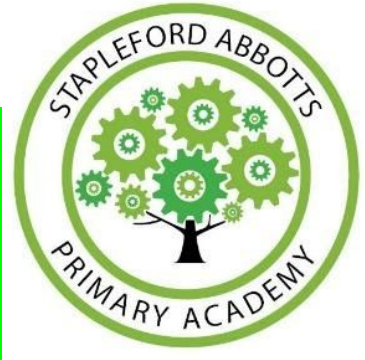


Silver Birch timetable

Day	8:45 - 9:00	9:00-9:30	9:30-10:45	10:45-11	11:00 - 12:00	12:15-1	1-1.15	1:15 - 1:30	1:30 - 2:30	2:30-2:50	3:00 - 3:15	
Mon	Reading	VIPERS	English T4W	Break	Maths	Lunch	PE <u>Indoor 1 - 2</u>		Foundation	Assembly	Big Read	
Tues		VIPERS	English T4W		Maths		Handwriting	Foundation		Singing Assembly	Big Read	
Wed		VIPERS	English T4W		Maths		Maths Meeting	Spanish	PE outdoor		Assembly	Big Read
Thur		VIPERS	English T4W		Maths		Maths Meeting	PSHE	Science		Big Read	
Fri		VIPERS	English T4W		Maths		Spelling Test	Maths Meeting	Foundation		Big Read	

HOMWORK EXPECTATIONS

- OUT FRIDAY IN WEDNESDAY
- SPELLING TEST FRIDAY MORNING - BACK OF BLUE BOOK



READING EXPECTATIONS

- Reading at home every night - your child may sign their reading record themselves with a short sentence of what they have read but we still encourage parents/guardians to read with and to their children as much as possible.
- Quizzing at least once a fortnight
- A reading for pleasure book may be read aside this if confident

*Why do we encourage your child to read for
20 minutes every day at home?*



Child A



Child B

**JUST
ONE
MINUTE**

Child C

20 minutes a day

5 minutes a day

1 minute a day

3,600 minutes a school year

900 minutes per school day

180 minutes per school year

1,800,000 words a year

282,000 words per year

8000 words a year

If they start reading for 20 minutes per night in Nursery, by the end of Year 6,
child A will have read for the equivalent of 60 days,
child B will have read for 12 school days and
child C will have read for 3.

That's why.



READING RECORDS EXPECTATIONS

Victor Vocabulary might ask...

What does this word/sentence tell you about _____?

Can you find a word/sentence that backs up what you have just said about _____?

Why did the author use the word _____ to describe _____?

How does this word/description make you feel?

Can you think of another way of saying _____?

Which words has the author used to make you feel happy/angry/worried/frightened/nervous?

Why is this word written in bold/italics/capital letters?

What effect has the author created by repeating the word/phrase _____?

Can you give me another sentence with the word _____ in it?

Can you read around this word to work out what it means?

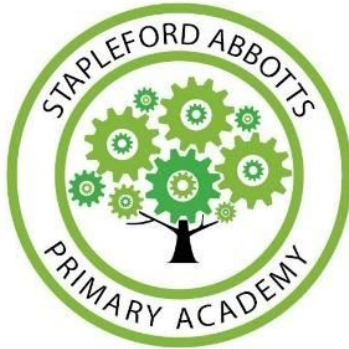
How/where can we find out the meaning of this word?

Can you find any noun phrases used to describe _____?

Can you find any adjectives used to describe _____?

Can you find any adverbs to describe how _____ was done?

Can you explain _____ in your own words?



Vocabulary Victor might ask...

What does this word tell us about the character/setting/atmosphere?

Look at that sentence/passage and circle a word/phrase that means the same as _____.

Which words/phrase in this text give us the impression that the main character is _____?

Which words/phrase in this text give us the impression that the setting is _____?

Which words/phrase in this text give us the impression that the atmosphere is _____?

The author uses words like _____ to describe _____. What impression does this give us of the character/setting/atmosphere?

The author describes the main character as _____. Think of another word that could be have been used instead.

Why did the author use the word _____ to describe _____?

How does the author make the reader feel _____ in this part of the text?

How has the author's choice of words created the feeling _____?

What do phrases such as _____ tell you about _____?

What might that mean?

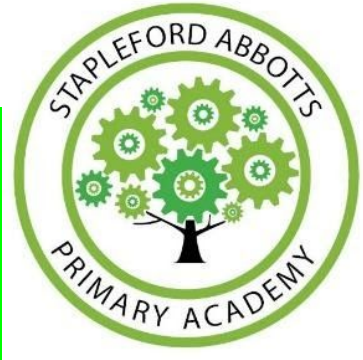
What do you think the writer is saying, when they _____?

What does that imply/suggest/indicate about _____?

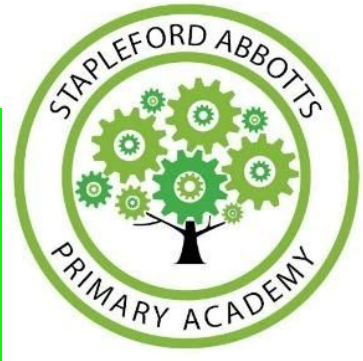


WRITING

- TALK FOR WRITING
- HANDWRITING
- SPELLING



MATHS MASTERY/TTROCKSTARS





SAPA Whole school curriculum map 2022/2023



- Science, PE, PSHE/RSE and Spanish are taught weekly
- Geography, History, Art, DT, Music, Computing and RE are taught in blocks throughout the year.
- Forest school is taught every Thursday (classes on half termly rota throughout the year)

Week/Term	1	2	3	4	5	6	7
Autumn 1	History (6 lessons)		Art (6 lessons)		Music (6 lessons)		Computing (3 lessons)
Autumn 2	Computing (3 lessons)	Geography (6 lessons)		DT (6 lessons)		RE (6 lessons) Music (Christmas)	
Spring 1	History (6 lessons)		Art (6 lessons)		Music (3 lessons)		
Spring 2	Geography (6 lessons)		DT (6 lessons)		RE (6 lessons)		
Summer 1	History (6 lessons)		Art (6 lessons)		Computing (6 lessons)		
Summer 2	Geography (6 lessons)		DT (6 lessons)		RE (6 lessons) Music (3 lessons)		PSHE Whole school Project

39 school weeks

Weekly

Science - Weekly - 1 ½ hour - 39 lessons 58.5 hours KENT

PE - Weekly - 1 ½ hour - 39 lessons 58.5 hours Real PE

PSHE/RSE - Weekly - ½ hour - 39 lessons 19.5 hours PSHE Association

Spanish - Weekly - 20 minutes - 39 lessons 8 hours Language Angels

Blocked

History - 18 lessons - 3 lessons = 4h - 24 hours

Geography - 18 lessons - 1 ½ - 24 hours

RE - 18 lessons - 1 ½ - 24 hours

DT - 18 lessons - 1 ½ - 22.5 hours

Art - 18 lessons - 1 ½ - 22.5 hours

Computing - 12 lessons - 1 ½ - 22.5 hours Teach Computing

Music - 12 lessons - 22.5 hours Sing Up

DATES FOR THE DIARY

- GUIDE DOG VISIT
- OLYMPIAN VISIT : TUESDAY 3RD OCTOBER
- PARENTS EVENING : MONDAY 20TH NOVEMBER AND THURSDAY 23RD NOVEMBER



PTA

We would love to
invite you to join

Supporting the school
and raising money.

Organising fun events for the
children

If you are interested please
contact us via-

Instagram: pta stapleford

Email: pta@sapa-tkat.org

Meeting's are held the first
Thursday of the month.



BREAKFAST CLUB

PTA

PARENT GOVERNOR

CLUBS

